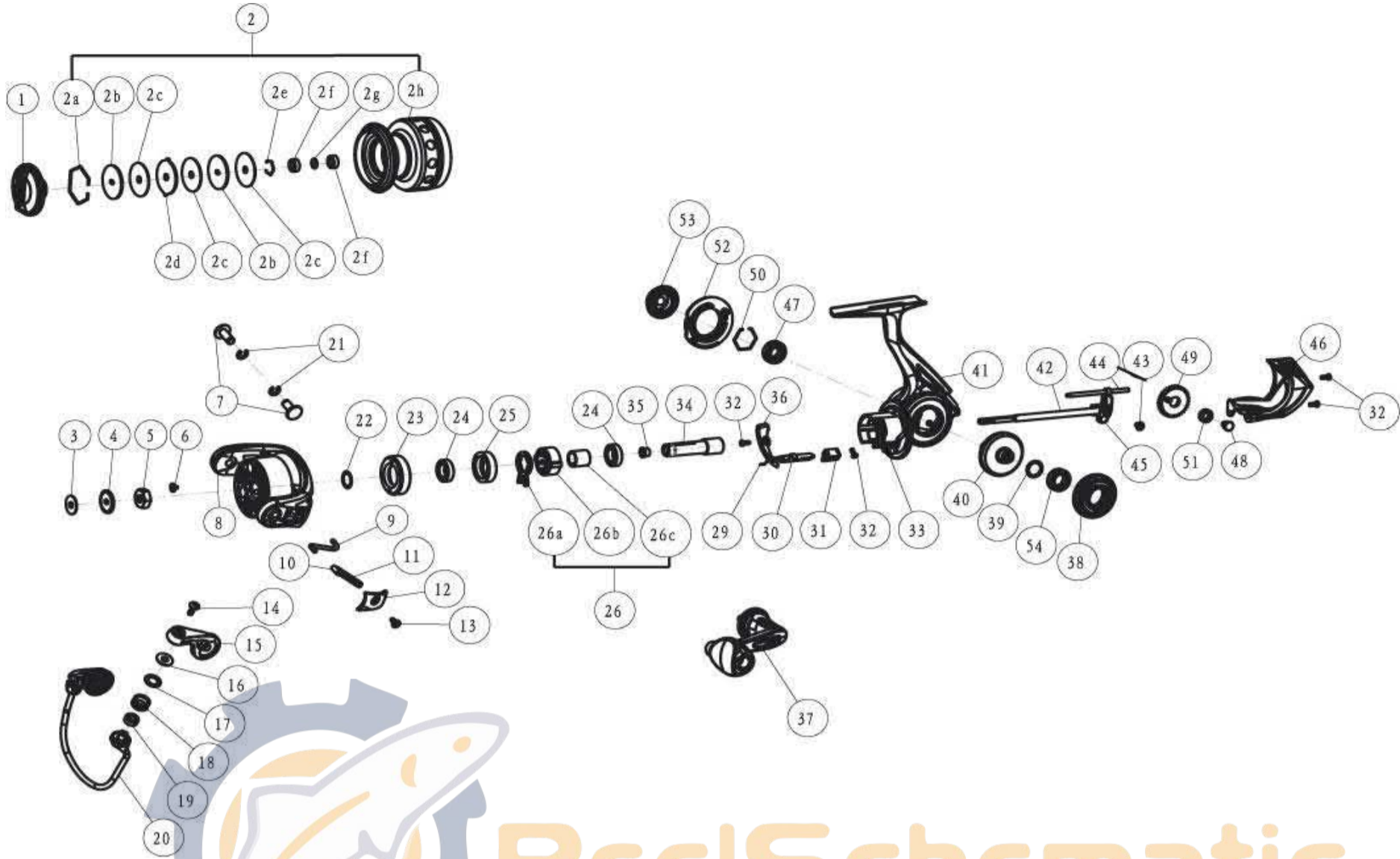


QUANTUM

TH50



Quantum THROTTLE - TH50 Part List

Key No.	Description	Part No. TH50	Qty	Key No.	Description	Part No. TH50	Qty
1	Drag Knob Assembly	BAA332-01	1	25	Clutch Bearing Adapter	YAD190-01	1
2	Spool Assembly	ZAD321-01	1	26	One way clutch kit include		1
2a	Retainer Ring	BAA038-01	1	26a	One Way Clutch lever	BAA064-02	1
2b	Drag Washer "D"	TAD080-01	2	26b	One Way Clutch	BAA063-01	1
2c	Drag Washer "B"	BAA033-01	3	26c	Sleeve	YAD139-01	1
2d	Drag Washer "A"	CAA081-01	1	29	Stopper Cam spring	TAD089-01	1
2e	Retainer Ring	BAA119-01	1	30	Stopper Cam	YAD090-01	1
2f	Spool Ball Bearing	GH202A-01	2	31	Stopper Lever	BAA059-01	1
2g	WASHER	BAA076-01	1	32	Stopper Lever Screw	BAA135-01	4
2h	Spool	ZAD021-01	1	33	Clutch spring	BAA216-01	1
3	Spool Adjust Washer	BAA030-01	1	34	Pinion Gear	YAD011-01	1
4	Clicker Gear	YAD037-01	1	35	Pinion Bushing	AA014	1
5	Rotor Nut	BAA006-01	1	36	Trip Ramp	SAD119-01	1
6	Rotor Nut Lock Screw	BAA094-01	1	37	Handle Assembly	YAD318-01	1
7	Arm Lever Screw	YAD042-01	2	38	Body Side Ring	YAD142-01	1
8	Rotor	ZAD009-01	1	39	Drive Gear Adjust Washer	BAA105-02	1
9	Kick Lever	ZAD019-01	1	40	Drive Gear Assembly	YAD012-01	1
10	Bail Actuator	BAA031-01	1	41	Body	YAD001-01	1
11	Bail Spring	BAA022-01	1	42	Main Shaft	YAD015-01	1
12	Arm Lever Cover	ZAD087-01	1	43	Main Shaft Screw	BAA100-01	1
13	Arm Lever Cover Screw	TAD077-01	1	44	O/S Guide Pin	YAD093-01	1
14	Line Roller Screw	BAA108-01	1	45	O/S Slider	YAD025-01	1
15	Arm Lever	YAD007-01	1	46	Body Rear Cap	YAD140-01	1
16	Line Roller Collar	CAA102-01	1	47	Body Ball Bearing	TW058-01	1
17	Line Roller Washer	BAA102-01	1	48	O/S Gear Pin	TAD062-01	1
18	Line Roller	BAA004-01	1	49	O/S Gear	YAD053-01	1
19	Line Roller Ball Bearing	GH202-01	1	50	Retainer Ring	TAD038-01	1
20	Bailwire Assembly	ZD347-01	1	51	O/S Gear Bearing	CT157-02	1
21	"E" clip	QW120A-01	2	52	Body Trim Ring	YAD145-01	1
22	Rotor Adjust Washer	BAA105-03	1	53	Handle Cap	TAD054-01	1
23	Clutch Bearing Cap	YAD040-01	1	54	Body Ball Bearing	TW058-01	1
24	Pinion Ball Bearing	UK028-01	2				